

# ATKINSON TRIG

This trigonometrical station is one of a network of stations that was erected in this area in the late 1800s by the New South Wales government. Atkinson Trig was built in 1878 and is 765 metres above sea level.

Trig stations were usually located on the highest points providing accurate control data for land surveyors and map makers. A pile of rocks, known as a cairn, helped to mark many trigs. The data held on each station included its height above sea level, latitude and longitude and bearings to other nearby trigs.

Other trigs in this area, including Poppet, Amungula and Cohen trigs, are located on the range of hills to the north. These are now on the border between the ACT and New South Wales.

Although Atkinson trig is no longer used by the Office of the Surveyor-General of the ACT, it remains an important relic of the cultural history of the region.

Today, few trigs are regularly used because satellite based Global Positioning Systems (GPS) now provide the control information that land surveyors and map makers require.

## Why Atkinson Trig?

The trig is located on the land granted by the Crown to James Atkinson of 'Toongabee' (Toongabbie, North West of Parramatta) in 1837 - Portion 1 of 1270 acres (514 hectares) in the Parish of Amungula.

It was purchased for £317 10/- (\$635) which was a lot of money back then.

Atkinson Street in Queanbeyan is named after James Atkinson and Edward Carleton Atkinson, also of 'Toongabee'.

## The rise and fall of a community

After the Robertson Land Acts of the 1860s, which led to small selections generally of 40 acres (16 hectares), the area surrounding Portion 1 to the north and to the west of Atkinson Trig developed into a small, vibrant community with its own school. However, generally small properties, poor soils, pests including hares and rabbits, and bad economic conditions led to the community's demise in the 1890s and early 1900s.

It is fortunate the relics of several of the early European structures from this small community remain in the region. These are in the northern reaches of Portion 1 and on Portions 20, 44 and 46 on the map.

## The Glenburn/Burbong Heritage Trail

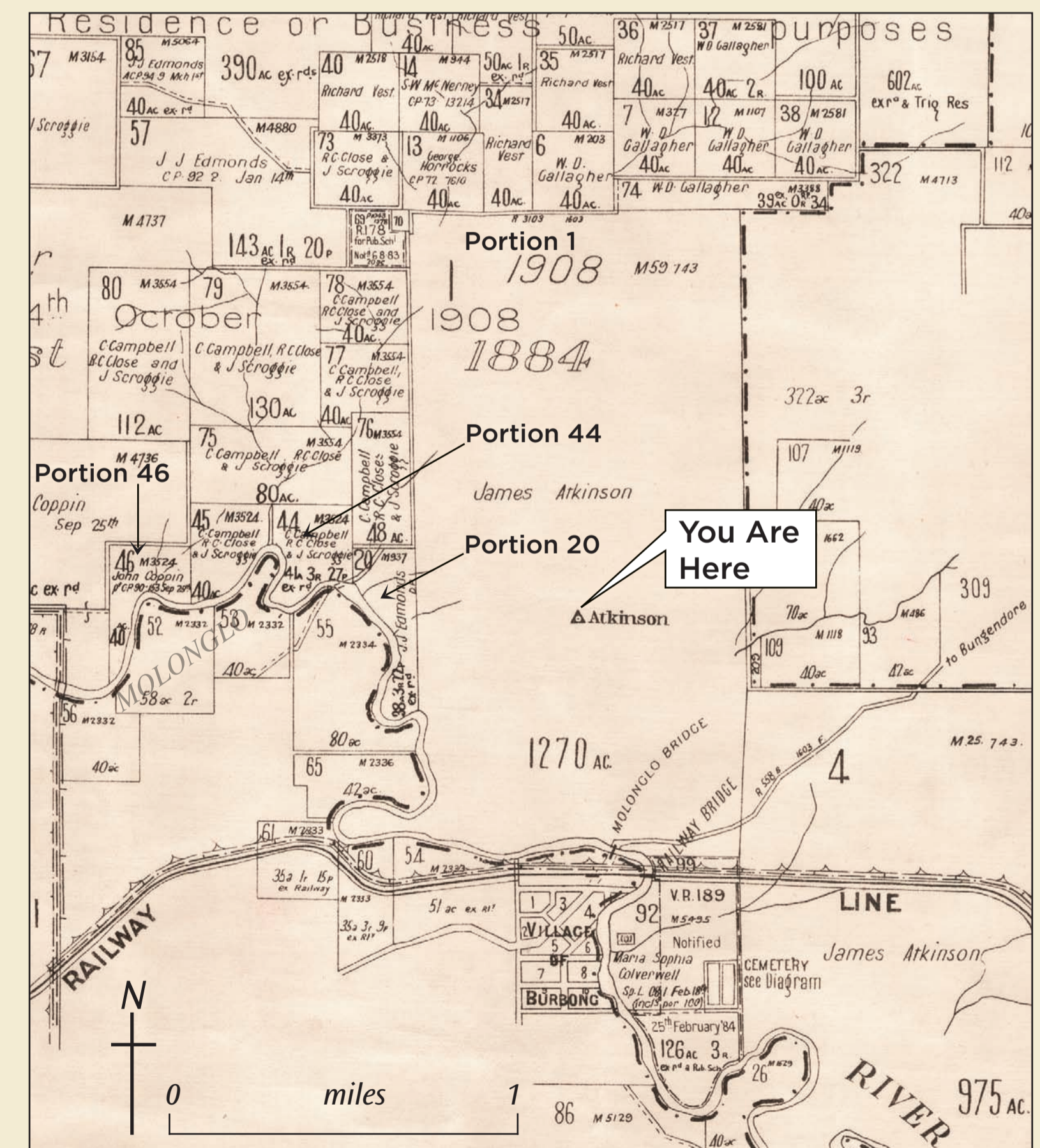
As you explore this area of Kowen Forest, take the time to read the signs that are located at some of the historic sites and reflect on the lives of the early settlers who lived here.

The Glenburn/Burbong Heritage Trail connects these relics.

*Please do not disturb any part of the trig in any way. In particular, do not shift or remove any rocks from the stone cairn.*



The photograph of the trig and beyond was taken facing north. The buildings of the Canberra International Clay Target Club and Glenburn Homestead can be seen in the cleared area between the two pine forested areas on the left hand side of the photo. Poppet (918m), Amungula (915m) and Cohen (918m) trigs are on the top of the hills on the far left, centre and far right of the photo.



The map (part of the Third Edition Map of the Parish of Amungula NSW Department of Lands, 1909) shows the location of Atkinson Trig together with the boundaries of Portion 1 and other surrounding Portions. Map courtesy National Library of Australia.

